



Shepton Mallet Community Infants' School & Nursery



NEWSLETTER



Parent and Friends Association (PFA)

Update

We would like to thank all those parents who volunteered to help with this event and make it so successful, from decorating the Christmas tree to brushing the floor. We couldn't have done it without you!

Thank you all for supporting the event, we raised a fantastic amount of money.

Raffle raised : **£498.00** The Fayre raised : **£546.15**

We would like to thank: Charlton house, Seven Springs Studio, Mendip Golf Club, Hive, Denelas, Tesco, Wells Blue Sports Centre, Lakeside, Lyons, Mad Hatters, Planet Volt, Berry's, Sean the Chef, Rapide, and to everyone else who donated a raffle prize.

A list of winners will be put on the PFA noticeboard.

Thank you from the PFA



Thinking of buying your Christmas presents.. ?

Why not buy them through the Easyfundraising website as a search engine. This is an easy way to help support the school by using this website/app to do your online shopping. **Please check it out and join using the link below or scan the QR code.** If you need any help please contact the office.



www.easyfundraising.org.uk/causes/fosmi

Paper copies are available on request, please contact the office.

Shepton Mallet Community Infants' School & Nursery

Waterloo Road, Shepton Mallet. BA4 5HE

T: 01749 342322 E: office@sheptoninfants.co.uk

Website: www.sheptonmalletinfants.co.uk





School success starts with attendance

4th September to 27th November 2023

Thank you for supporting your child's school attendance.

Attendance target is

96% for each class per week.

Kingfisher Class 93.9%

Robin Class 94.3%

Woodpecker Class 94.1%

Goldfinch Class 91.4%

Starling Class 93.6%

Hummingbird Class 93.5%

Whole School 93.5%



Mufti Day Update

Friday 17th November

You helped raise a whopping **£142.13**

Thank you to everyone who donated to this good cause.

Year 2 Cake Sale Update

Thank you to everyone who donated cakes and who supported this event.

The Cake Sale raised: **£77.65**

We are always looking for people to help with the cake sale stall, if you would like to get involved, please let the office know.



Reminder that if your contact details have changed, please let the office know as soon as possible as this enables us to have the correct information in case of an emergency.



Winter is here..

The weather is getting colder so please ensure that your child comes to school with a coat and hat. Please label everything.

Preloved Uniform is Available

Every Wednesday

From 3.20 - 3.30pm

Bring and Swap for a larger size or make a small donation.



School Day

Monday - Friday

- 8.30am Gates open for children to start entering the school site.
- 8.40am Doors open
- 8.50am Official start of the school day.

All children to arrive by this time and enter their class ready for the school register to be taken.

- 8.50am Gates close
- 12:00 – 1:00pm Lunchtime
- 3.20pm End of School day.

Total Time in school 32.5 hours a week (6.5 hours a day)

Please ensure your child is dropped off promptly in the morning so no missed learning takes place, and is collected promptly at the end of the day.



Class Pages

What have we been doing..



Kingfisher and Robin Class

Have been very busy learning! We have found out about Hanukkah, the story that started the festival and how people celebrate it. We have also found out the story of the first Christmas and will be finding out how we celebrate this festival over the next week.

Our phonic acquisition continues to improve and next week we will be learning the phonemes l and b and in Maths we will be working on using more than and less than to compare two amounts.

We are also working hard on learning our Nativity songs to share with you in a few weeks. Letters about dates of the nativity performance and the costume your child needs will be sent home next week.



Goldfinch and Woodpecker class

Have been enjoying carnival poetry, partitioning number 5, evaluating our Christmas bauble decorations and beginning to learn our songs for the Christmas nativity.

Costumes to be sent into school next week for the nativity please. Your child will have taken home a letter last week with their character and what they need to wear. If you have any problems with the costume please let me know and I will be happy to help.



Starling and Hummingbird class

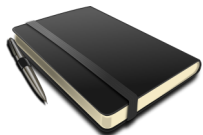
Have been very busy, in maths we have been learning how our number bonds to 10 can help us to add and subtract bigger numbers.

In English, we have written a recount of our cinema trip and we have been looking at writing in the past and present tense. In Science, we learned about natural and artificial sources of light.

We had a brilliant time on our cinema trip to Strode Theatre. Lots of the children have been telling us all about how amazing the Shepton Carnival was too!

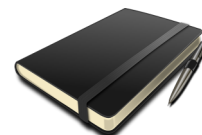
Added to all that excitement, we've been working hard learning about writing in the past tense, using number facts to solve addition and subtraction problems and investigating why we have day and night in our science lessons!





Dates for your Diaries

All dates subject to change/cancellation depending on any restrictions

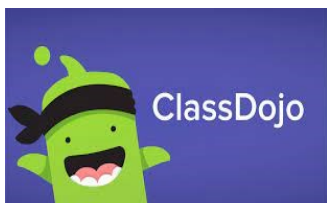


December

Monday	4th	Starling Class LAST Sports Club
Friday	8th	Christmas Jumper Day
Tuesday	12th	Reception/Nursery Nativity Play 9.30am & 2.30pm
Wednesday	13th	Year 1/year 2 Nativity Play - Woodpecker/Starling - 9.30am & 2.30pm
Thursday	14th	Year 1/year 2 Nativity Play - Goldfinch/Hummingbird - 9.30am & 2.30pm
Friday	15th	Christmas Lunch
Friday	15th	Christmas Party
Friday	15th	Break up for Christmas Holidays 2.20pm

January 2024

Tuesday	2nd	INSET Day - School & Nursery Closed
Wednesday	3rd	Back to School
Wednesday	3rd	Woodpecker Class Sports Club STARTS



REMINDER - Please could we remind parents and carers that **Class Dojo is not** for messaging regarding your child's absence, medical appointments and general messages of who is collecting or if they will be late or being picked up early.

In these instances please inform the school office. Thank you

HAPPY BIRTHDAY



To Ella, Hazel, Serafina-Maii, Theo, Luca, Alicja, Kelsie, Ronnie, Theo, Aria, Icy, Logan, Alfie, Shantana, Winnie, Orson, Trey and Logan



Who all have had birthdays in November

From everyone at Shepton Mallet Community Infants' School & Nursery

Safeguarding Statement

We recognise our moral and statutory responsibility to safeguard and promote the welfare of all pupils. We endeavour to provide a safe and welcoming environment where children are respected and valued. We are alert to the signs of abuse and neglect and follow our procedures to ensure that children receive effective support, protection and justice. The Senior Designated Officer (SDO) is the Headteacher, Mrs Thompson. For a copy of the School's Child Protection and Safe guarding Policy please click on the policies link at the bottom of the page. The procedures contained in this policy apply to all staff and governors and are consistent with those of the Somerset Safeguarding Children Board (SSCB).

Report a concern

If you are worried about a vulnerable child and would like help, please don't stay silent.

Contact: **Children's Social Care** on:

0300 123 2224

or

E: childrens@somerset.gov.uk


4






TLE Active

Wrap-Around Care



Breakfast Clubs
After School Clubs - Science, Art, Sport

Wrap Around Care

Full Year Provision

Find out more below



TLE Contact Number:
07951 291471

[TLESportsCoaching.CO.UK](https://www.tlesportscoaching.co.uk)





Parent & Family Support



PFSA Autumn Competition

We would love for you to share the amazing Autumnal activities you get up to as a family. If your child would like to draw us a picture of something you have enjoyed doing together, please print their full name and class on the back of the picture (with a title or caption if you'd like) and send it in to the school office or your child's teacher, by Thursday 7th December. We will then pick an overall winner to be printed in the December newsletter for all to see. The winner plus two runners up will also win a Christmas treat!

Please ask at the school office if you need paper or colouring pencils. Some free activity ideas below!

Family activity ideas



Leaf rubbing. Decorating pinecones. Welly walks. Playing conkers. Baking gingerbread or other biscuits. Making paper chains. Making soup or bread rolls. Make spice scented play dough. Autumn scavenger hunt- can you make a collage from your collection? I spy Autumn changes. Salt dough decorations. Try knitting or sewing. Board or card games. Build a den out of chairs and blankets and hide away with books and a hot chocolate. PFSA Autumn competition drawing!

Ways to stay warm for less

- Cuddle up on the sofa with a hot water bottle, a blanket and a good book!
- Close doors around the house to keep heat in occupied rooms.
- Close your curtains to help keep heat in your rooms. Don't allow curtains to hang in front of radiators.
- Wear layers.
- Make hot drinks in the evening. A hot milk before bed can help you sleep too!
- Stop draughts under doors by blocking gaps with a rolled-up towel.
- Turn down the radiator temperature in rooms not being used.
- Keep as active as possible to boost your circulation.



Additional support

- Somerset Direct 0300 123 2224 (family advice in a crisis and concerns for the welfare of a child)
- Mind 0300 123 3393 (mental health support)
- Shout UK – Text 85258 24/7 in a crisis (mental health support)
- Somerset Domestic Abuse Helpline - 0800 69 49 999 (domestic abuse support)
- Citizens Advice Bureau – 0808 223 1133 (for advice around grants, benefits, work, debt, money, and much more)

Learn more about Energy Bills Support Scheme:

<https://www.gov.uk/get-help-energy-bills/getting-discount-energy-bill>



**Remember we are also here to help.
Pick up a leaflet from the school office for more details.
Take care, Heather and Ellie.**



**Parent and Friends
Association**



Thursday 7th December

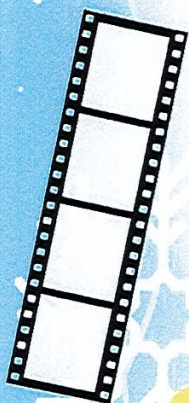
Christmas Movie Night

**Shepton Mallet Community
Infants' School & Nursery**

4.30 – 6.15pm

**Tickets £2.50 includes hot
chocolate and a biscuit.**

Tel: 01749 342322



Parentkind
Member Association



SHEPTON MALLET WINDOW WANDERLAND

JOIN THIS YEAR'S WINDOW WANDERLAND
AND LIGHT UP THE STREETS THIS DECEMBER.

REGISTER YOUR WINDOW FOR FREE

LIGHT UP YOUR WINDOWS AND JOIN IN THE WALKING TRAIL
TO SEE WHAT YOUR NEIGHBOURS HAVE CREATED

30TH NOVEMBER-3RD DECEMBER

COLLECT YOUR FREE WINDOW MAKING PACKS FROM:
SHEPTON MALLET TOWN COUNCIL OFFICES | LIBRARY | ART BANK

THERE WILL BE A FREE WORKSHOP TO HELP YOU WITH YOUR
CREATIONS - MORE INFORMATION ONLINE:





WWW.WINDOWWANDERLAND.COM/EVENT/SHEPTON-MALLET-2023/



FESTIVE FUN FOR THE WHOLE FAMILY!

CHRISTMAS CRAFT FAIR

ST PETER AND ST PAUL'S CHURCH
SHEPTON MALLET

2ND DECEMBER 10 AM- 2.30PM

SHEPTON MALLET lantern festival

**PARADE -Saturday 16th December 2023
start time 5pm at the Band Stand**






Volunteers will help you make your own willow and tissue paper lanterns,
£2 for basic materials kit
children are welcome, under 16 must be supervised

WORKSHOP DATES

Saturdays & Sundays 10am to 4pm
November 25th and 26th
December 2nd and 3rd

Paul Street Community Centre,
Paul Street, Shepton Mallet,
BA4 5LA




We have been very generously sponsored by






and very kindly supported by










WHAT	WHERE	WHEN
Skate Jam (rescheduled from July)	West Shepton Skate Park	23 September
Shepton on Show	The Art Bank	20 October
Shepton Mallet Fireworks	West Shepton Playing Fields	04 November
Carnival	Across Shepton Mallet	15 November
Make the Sunshine November Fire Show	Market Place	17 November
Christmas Tree Lights Switch On & Late Night Shopping	Market Place	01 December
The Lantern Festival	Collett Park	16 December
Shepton Walks – Beat The January Blues	Across Shepton Mallet	01, 07, 14, 21 & 28 January
Snowdrop Festival	Across Shepton Mallet	12 – 18 February
Easter Egg Hunt	Collett Park	30 March

Friday Market Visit Shepton's historic Friday market, which dates back to 1318, for a wide range of fresh local produce and crafts. **Every Friday from 9am-2pm, Market Place**

Download our free heritage trail app

With 9 audio trails exploring our rich social, cultural & economic history.






Promote your business or event
for FREE on
www.helloshepton.com



Shepton Mallet Community Infants' School & Nursery

Is asking for votes to get a share of
Tesco's Stronger Starts fund

Please support us!

Running from 2nd October - January 2024

We are one of the three in for a Tesco Stronger Starts Grant!

Project Name: Happy Gardeners

About our Project: Our project will enable the children to benefit from planting, growing and eating their own fruit and vegetables. They will also grow flowers and study the wildlife in the pond.

Shepton Mallet Community Infants' School & Nursery are bidding for a cash boost from the Tesco Stronger Starts initiative. Tesco works with community charity Groundwork to run its community funding scheme, which sees grants of up to £1,500, £1,000 and £500 awarded to local community projects, with a particular focus on children and young people.

Three groups in every community have been shortlisted to receive the cash award and shoppers are being invited to head along to Tesco stores to vote for who they think should take away the top grant.

Tesco's Stronger Starts – previously Tesco Bags of Help and Tesco Community Grants - has already provided over £100 million to more than 50,000 projects across Britain.

Thank you

For more information please visit: tesco.com/strongerstarts

